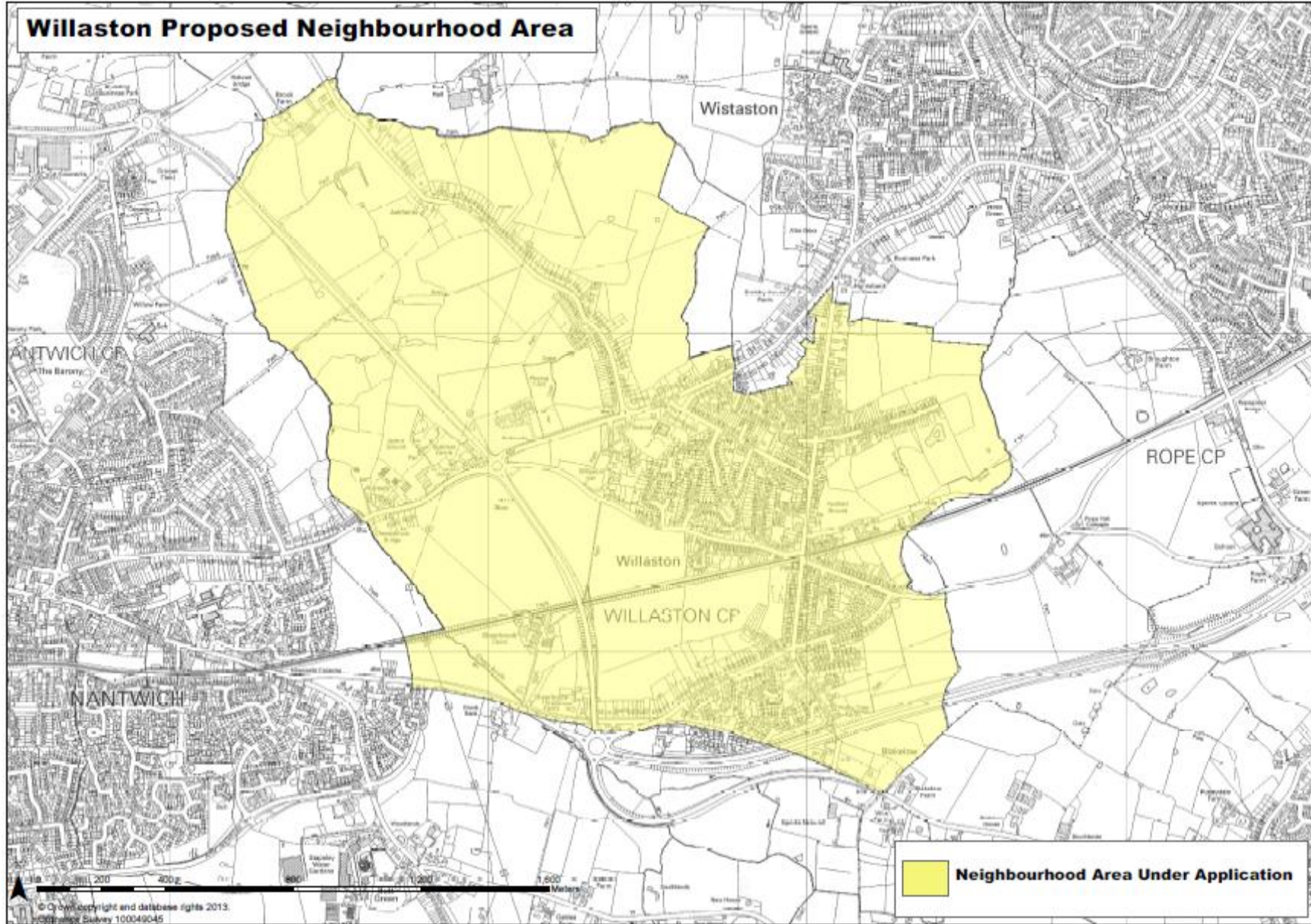


Organisation	Willaston Parish Council
Name	Martin Langhorn
Position	Clerk
EmailAddress	willastonpc@btinternet.com
Telephone	01270 664152
Add_Additional	No
Representing_Relevant_Body	Yes
Relevant_Body_Reason	Willaston Parish Council is a relevant body for the purposes of section 61G(2) of the Localism Act 2011.
Town_Parish_Council	Willaston is a Parish Council
Neighbourhood_Name	Willaston Neighbourhood Area
Neighbourhood_Area_Description	Willaston Parish is situated between Crewe and Nantwich and consists of the electoral wards of Willaston Village and Willaston North. The A534 road cuts through the village and there are close links to the railway network via Crewe Station and the motorway network via the M6. There are some 1,500 households in the village with approximately 2,500 residents on the electoral roll. There are three public houses within the village, along with a Premier Inn, a social club, a masonic hall, two church halls, a scout group, a football club, a cricket club, a bowling club and a primary school. There are also a small number of retail outlets, including an award winning farm shop. The village has been an entrant in the North West in Bloom Competition for many years and has achieved a silver gilt award in each of the last three years.
Neighbourhood_Area_Appropriate	The village is surrounded by Green Gap land as defined in the saved Crewe & Nantwich Replacement Plan 2011, but continues to experience intense pressure from developers for speculative and unplanned development. There have been recent instances of speculative planning applications being refused by the local council but then being approved on appeal due to the lack of an adopted plan. Willaston published its Parish Plan in 2009 after extensive consultation with the local community, during which 93% of respondents considered the safeguarding of the Green Gap as either "Very Important" (83%) or "Important" (10%). At its meeting on 24th February 2015 Willaston Parish Council resolved that it should proceed with the production of a Neighbourhood Plan. At a further meeting held on 10th March 2015, which was also attended by a representative of Cheshire East Council in an advisory capacity, it was determined that the Neighbourhood Area should precisely match the parish area (which was also the area used to produce the Parish Plan in 2009).
Intention_Development_Plan	yes

Willaston Proposed Neighbourhood Area



 Neighbourhood Area Under Application

© Ordnance Survey copyright and database rights 2013.
Ordnance Survey 100049045